

## CONSTRUCTION

### HORIZONTAL OPENWELL SUBMERSIBLE PUMP

Ideal for fountains, domestic use in buildings, Hotels, gardening and irrigation, even in industries For clear water handling and special pumps built for high pressure and dirty water



### BOREWELL SUBMERSIBLE PUMP

Creative engineers has been manufacturing & marketing "MALHAR" brand of vertical borewell submersible pumps suitable for bore size of 3" , 4" , 6" , 8" 10" , 12" and 14"

Agricultural, Industries, High rise Buildings, Fire Fighting, Sea water application. etc..

MALHAR submersible pumps are vertical , multi stage, centrifugal pumps with motor at the bottom & pump at the top. The water enters at the bottom of the pump and flows upwards through many stages.

The stainless steel bronze impellers rotate inside the diffusers with inherent guide vanes. The diffusers direct water leaving each impeller towards suction opening of the next impeller, such a flow through each stage of impeller and diffuser combination adds pressure at each stage and finally water under high pressure is discharged through outlet at the top



### SEWAGE & DEWATERING SUBMERSIBLE PUMP

APPLICATION : U- Effluent with slurry and solids , Dewatering man-hole sewers. Storm/Flood water transfer , Drainage of sewage

HEAD : Up to 90 Mtr

CAPACITY : - Up to 3000 lpm (In High speed pump), Up To 15,000 lpm (In Low Speed pump)



### FIRE FIGHTING PUMP

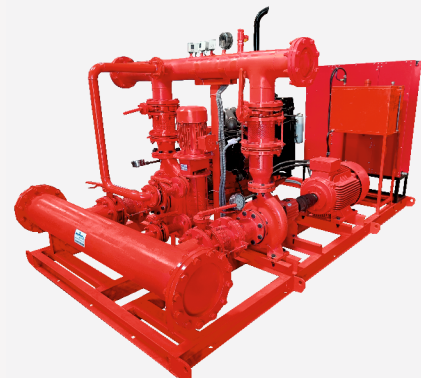
APPLICATION : A fire pump is a part of a fire sprinkler system's water supply and can be powered by electricity, diesel or steam. The pump intake is either connected to the public underground water supply piping, or a static water source (e.g. tank, reservoir, lake). The pump provides water flow at a higher pressure to the sprinkler system risers and hose stand pipes. A fire pump is tested and listed for its use specifically for fire service (by a third-party testing and listing agency if required)

CAPACITY : 3000 US GPM

HEAD : 348 PSI

RPM : AS PER YOUR REQUIREMENT

FREQUENCY : 50 HZ / 60 HZ



## CONSTRUCTION

### PRESSURE SYSTEM

**APPLICATION :** Automatic water supply pump is an automatic water supply pressure system which is consisted of electric pump, pressure box, pressure switch and connection head. This system possesses the functions of keeping a certain pressure and adjusting the water level. It is very suitable for using on water tower's water supply or residential district's water supply where several households water supply are requested.



### WATER METER

**APPLICATION :**

- Highly sensitive to low flow rates and very accurate over its entire flow range.
- Having low loss of head which allows water to reach upper floors.
- Sealed against tampering.
- Totaliser leakproof, totally dry.
- Self lubricating gears and bearings.
- Long maintenance free working life
- Remote reading facility/pulse output available on request.
- Hot Version available up 90°C



### AUTOMATIC BOOM BARRIER MAS 606 / 808

**FEATURES :**

- Economic style, cost effective, maximize your saving.
- Easy installation, spring balance debugging, superior quiet and stable operation.
- Manual release & Operation on power cut.
- Multi-connection available by remote control, button switch, safety beam sensor, loop detector, battery backup.
- 3.8 Mtr. to 6 mtr. telescopic boom.



### AUTOMATIC BOOM BARRIER MAS 505 / 505L

**FEATURES :**

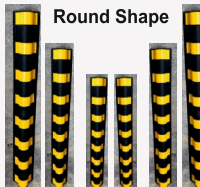
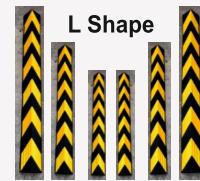
- MAS'S 505 Series barriers are ideal choice for Heavy duty operation, When the requirement is combination of maintenance free operation and designed for aesthetic look.
- Heavy duty, weather-proof and simple design housing with LED indication on body and boom.
- Maximum Boom Length 5 Mtr.
- Overall Aluminum Housing, rusty free.
- Side built led Alarm Light, eye-striking for users
- Maintenance free warm gear motor ensures 100% duty cycle.
- Maximum Boom length 5 Mtr.



## CONSTRUCTION

### CORNER GUARD

Spec.	L Shape	Round Shape	Pillar Guard
Length	800/1000/1200 MM	900/100/1200 MM	1000 Mm
Width	80*80 / 100*100 MM	75*75 MM	200 / 155 MM
Thickness	8-10 MM	25 MM Center	10 / 55 MM
Reflective	4*4" / 5*4" / 6*4 "	6*2.5" / 8*2.5"	Retro Reflective



### Round Pillar Guard



### RUBBER SPEED BREAKER

#### No Cement Filling Required

Installed With 1/2\*4 Inch Zink Plated/H.T. Bolt Installed With Epoxy Hardener

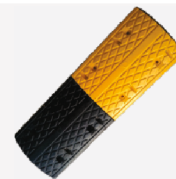
On Asfalut Road

Life : 4 to 5 yrs.

Tonne Capacity : 25 to 70 Tonne

Application : Speed Breaker

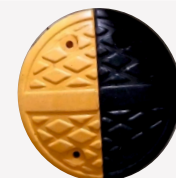
Are Traffic Calming Devices Installed In Accident Prone Areas



500\*350\*50 MM



500\*410\*75 MM



350\*250\*50 MM



500\*125\*25 MM



350\*250\*50 MM

### CONVEX MIRROR



CONVEX MIRROR MATERIAL POLYCARBONATE

LENS : UNBREACABLE

18"/45 CM, 24"/60 CM, 32"/80 CM, 40"/100 CM / 48"/120 CM